

ISEP® PMI SERVICE OFFERINGS

Preventative Maintenance and Inspection Service

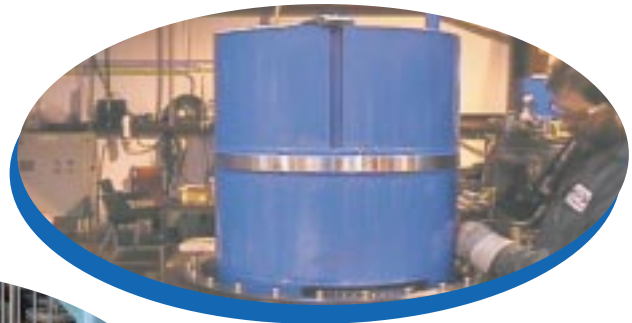
Calgon Carbon ensures that all parts of your ISEP® valve operate at maximum efficiency and that minor problems do not become costly ones by noting any wear, potential failures, and immediate replacement issues on the spot. Also, lubrication is checked and applied to external parts, and electronics and programs are maintained and/or upgraded as needed. Items that are routinely covered under the Preventative Maintenance and Inspection (PMI) Service are

- Inspection/lubrication of the gearbox and drive shaft
- Inspection of encoder cables and input to PLC
- Inspection of kill switch operation
- Inspection of all wire terminals and wires
- Compare cycle to regeneration times
- Collect periodic samples of resin to inspect for crushing or fouling
- Inspection of ISEP® hoses, N₂ delivery system, bladder housing gap, etc.
- Inspection of table, wheels, and tracks
- Record operating parameters (e.g., speeds, amps, % torque) and compare to previous readings

Each visit is concluded with a follow-up inspection report covering items inspected and condition, items replaced or repaired, and suggestions for the next visit detailing items that may need replacement or repair.

Parts

An optional portion of every service plan is the stocking and routine replacement of parts such as bladders and PLC batteries. Calgon Carbon will stock parts for your valve to assure prompt delivery if ordered. Typical parts stocked include bladders, encoders, speed sensors, PLC batteries, and standard wearing parts.



Services and Applications

Visit our website at www.calgoncarbon.com, or call 800-422-7266 to learn more about our complete range of products and services, and obtain local contact information.

SA-0006-0305

ISEP® PMI SERVICE OFFERINGS

Emergency Service

Emergency Service is an integral part of any Preventative Maintenance and Inspection service. The ISEP® Emergency Service includes 24-hour technical assistance and emergency on-site service in North America within 48 hours. This allows you to continue operation and minimize down time in the event of valve malfunction or breakdown.

Technical Support

Technical support is available from Calgon Carbon to assure continued optimal operation of your ISEP® valve. Periodic review of the operating parameters and notation of any deviations or drifting from the desired design will be noted in the periodic reports provided. Continual operator training will assure your staff is up-to-date on system operation. Also, Calgon Carbon's Technical Support staff will work with you to optimize your ISEP® valve's operation over time. This support includes incorporation of other process changes that may affect the ISEP®'s operation and can be expanded to include program modifications, HMI and master control logic integration, and software upgrades.

Calgon Carbon Advantage

Calgon Carbon Preventative Maintenance and Inspection provides many advantages:

- Over 15 years of experience with the equipment.
- Knowledge of part wear patterns and how best to correct valve operations based on unusual wear.
- Low, long-term service costs – we draw on our extensive knowledge to identify potential problems early so that corrections can be made prior to valve malfunction.
- Minimal down time – maintenance and inspection services can be performed during scheduled plant shutdowns, and repairs can be identified early so that they can be performed in a scheduled, controlled manner.
- Continued training to ensure that new employees have the same level of equipment knowledge that their predecessors had, as well as introducing new information regarding operation of the equipment.

By continuing routine inspections, most potential problems are identified before failure so that timely repairs can be made during scheduled plant outages, thereby not affecting production schedules.



Visit our website at www.calgoncarbon.com



CALGON CARBON CORPORATION
Calgon Carbon Corporation
P.O. Box 717
Pittsburgh, PA USA 15230-0717
1-800-422-7266
Tel: 412-787-6700
Fx: 412-787-6713

**Chemviron
Carbon**

European Operations of Calgon
Carbon Corporation
Zoning Industriel C de Feluy
B-7181 Feluy, Belgium
Tel: + 32 (0) 64 51 18 11
Fx: + 32 (0) 64 54 15 91

Your local office



SA-0006-0305

©Copyright 2005 Calgon Carbon Corporation, all rights reserved.